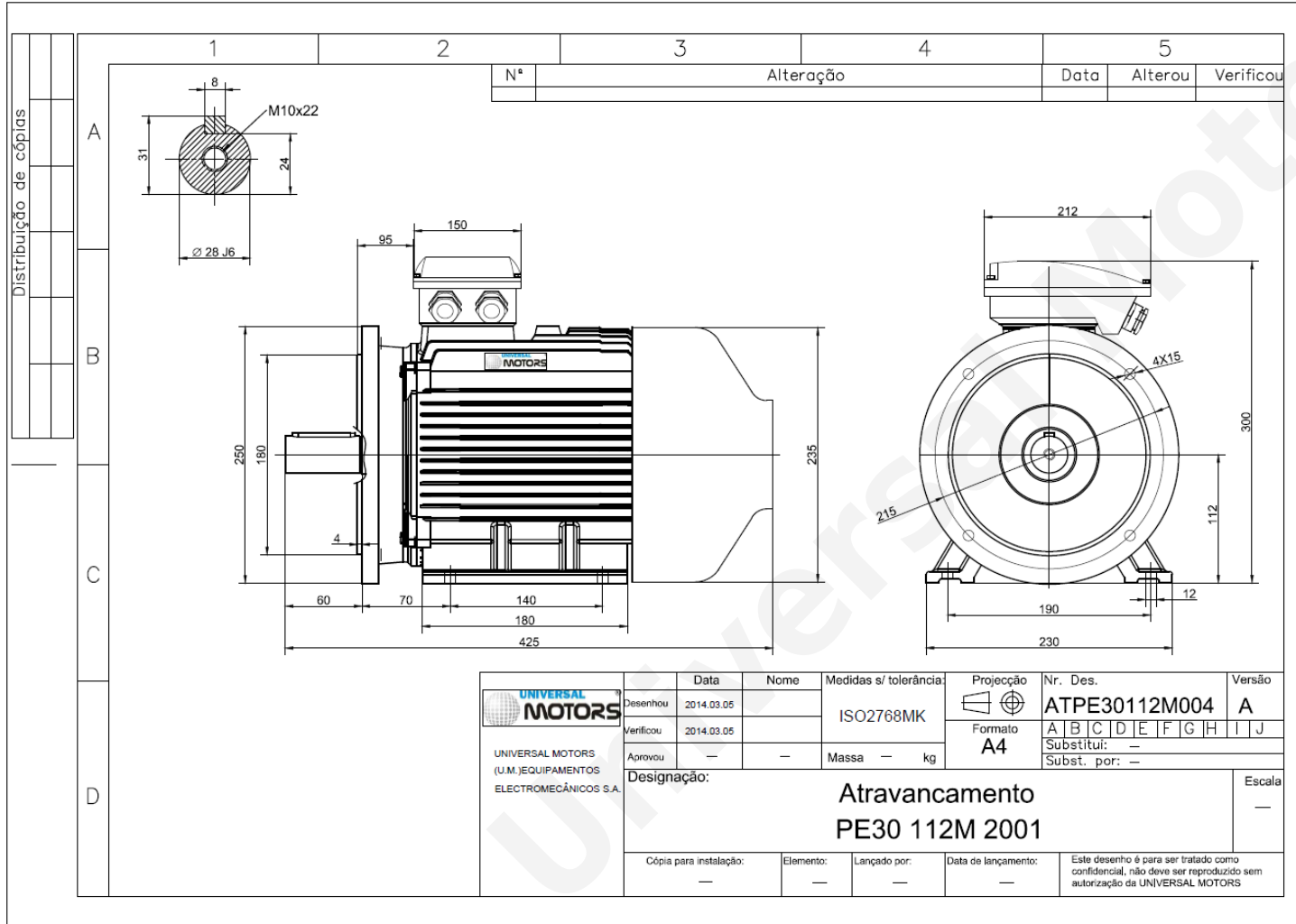


# TECHNICAL DATA

Three Phase Electric Motors - Cast Iron Frame  
 UM3C 112M-6 IE3  
 2.2 kW / 3 Cv  
 970 RPM



Motor type: **UM3C 112M-6 IE3**  
 Output: **2.2 kW / 3 Cv**  
 Speed (min<sup>-1</sup>): **970 RPM**  
 Voltage: **400 V**  
 Frequency: **50 Hz**  
 Current: **5.09 A**  
 Power factor (Cos Ø): **0.74**  
 Poles: **6**  
 Insulation class: **F**  
 Temperature rise Class: **B**  
 Efficiency 50%: **83.0 %**  
 Efficiency 75%: **84.7 %**  
 Efficiency 100%: **84.4 %**  
 Torque: **22 N.m**  
 Tstarting/Tnominal: **2.0**  
 Istarting/Inominal: **6.6**  
 Tmaximum/Tnominal: **2.1**  
 Noise: **65 Db(A)**  
 Weight: **49 Kg**  
 Bearing DE: **6306 2Z C3**  
 Bearing NDE: **6306 2Z C3**

Regime - S1

Altitude - 1000m

Environment Temperature - 40°C

**CONTACTS:**

Universal Motors UK, Ltd  
 Unit E2, Meltham Mills Industrial Estate, Meltham Mills Road, Meltham,  
 Holmfirth  
 West Yorkshire HD9 4AR, U.K

Tel: +44(0) 1484 660 222  
 Fax: +44(0) 1484 660 333  
 Mail: [enquiries@universalmotors-group.co.uk](mailto:enquiries@universalmotors-group.co.uk)

\* References applied only in the UK