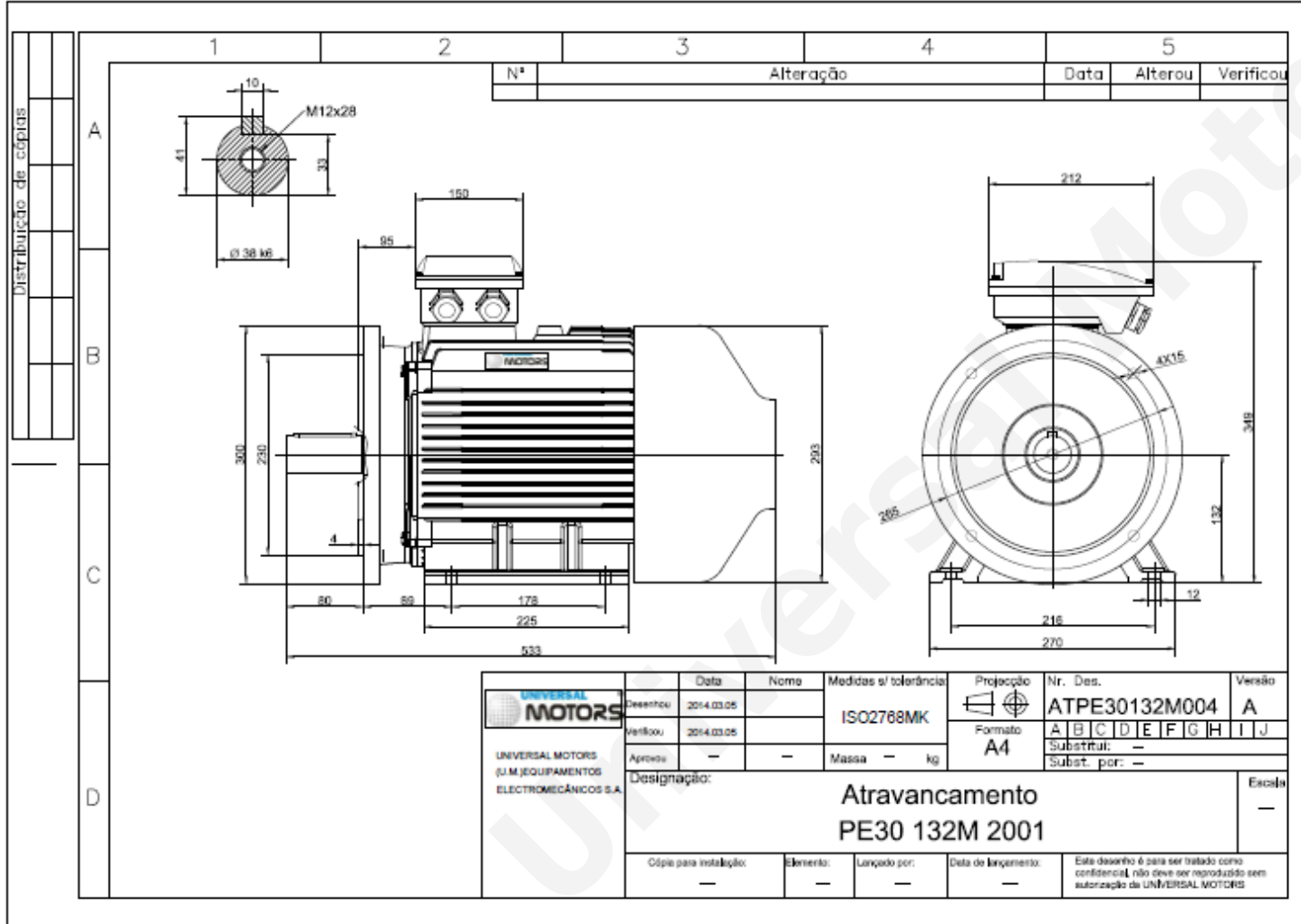


TECHNICAL DATA

Three Phase Electric Motors - Cast Iron Frame
UM3C 132M-8 IE3
3 kW / 4 Cv
710 RPM



Motor type:	UM3C 132M-8 IE3
Output:	3 kW / 4 Cv
Speed (min ⁻¹):	710 RPM
Voltage:	400 V
Frequency:	50 Hz
Current:	7.10 A
Power factor (Cos Ø):	0.73
Poles:	8
Insulation class:	F
Temperature rise Class:	B
Efficiency 50%:	80.5 %
Efficiency 75%:	83.8 %
Efficiency 100%:	83.5 %
Torque:	40 N.m
Tstarting/Tnominal:	1.8
Istarting/Inominal:	6.0
Tmaximum/Tnominal:	2.0
Noise:	64 Db(A)
Weight:	82 Kg
Bearing DE:	6308 2Z C3
Bearing NDE:	6308 2Z C3

Regime - S1

Altitude - 1000m

Environment Temperature - 40°C

CONTACTS:

Universal Motors UK, Ltd
Unit E2, Meltham Mills Industrial Estate, Meltham Mills Road, Meltham,
Holmfirth
West Yorkshire HD9 4AR, U.K

Tel: +44(0) 1484 660 222
Fax: +44(0) 1484 660 333
Mail: enquiries@universalmotors-group.co.uk

* References applied only in the UK