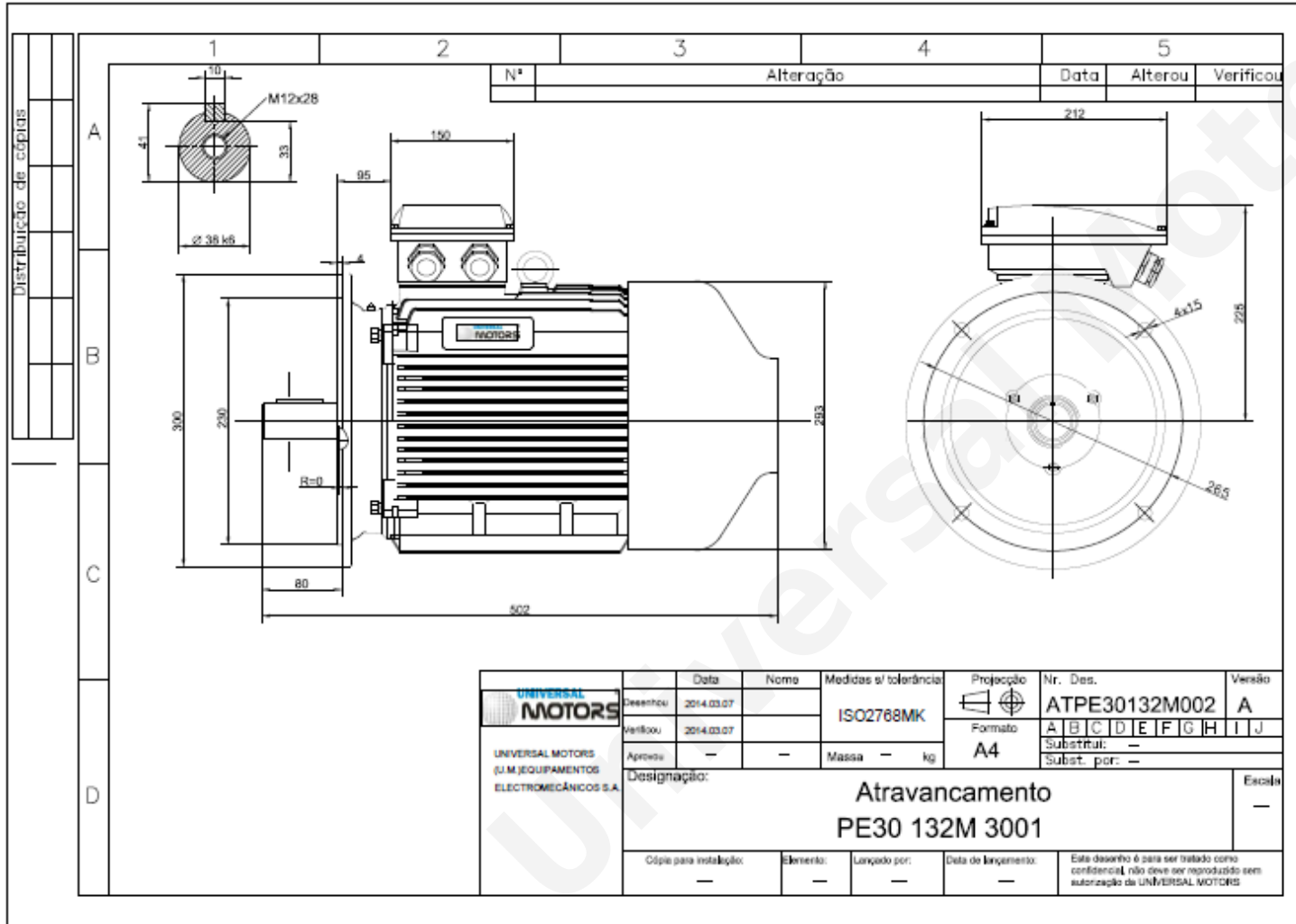


TECHNICAL DATA

Three Phase Electric Motors - Cast Iron Frame
 UM3C 132S-2 IE3
 5.5 kW / 7.5 Cv
 2940 RPM



Motor type: **UM3C 132S-2 IE3**
 Output: **5.5 kW / 7.5 Cv**
 Speed (min⁻¹): **2940 RPM**
 Voltage: **400 V**
 Frequency: **50 Hz**
 Current: **10.1 A**
 Power factor (Cos Ø): **0.88**
 Poles: **2**
 Insulation class: **F**
 Temperature rise Class: **B**
 Efficiency 50%: **88.6 %**
 Efficiency 75%: **87.9 %**
 Efficiency 100%: **87.4 %**
 Torque: **18 N.m**
 Tstarting/Tnominal: **2.0**
 Istarting/Inominal: **8.3**
 Tmaximum/Tnominal: **2.3**
 Noise: **79 Db(A)**
 Weight: **73 Kg**
 Bearing DE: **6308 2Z C3**
 Bearing NDE: **6308 2Z C3**

Regime - S1

Altitude - 1000m

Environment Temperature - 40°C

CONTACTS:

Universal Motors UK, Ltd
 Unit E2, Meltham Mills Industrial Estate, Meltham Mills Road, Meltham,
 Holmfirth
 West Yorkshire HD9 4AR, U.K

Tel: +44(0) 1484 660 222
 Fax: +44(0) 1484 660 333
 Mail: enquiries@universalmotors-group.co.uk

* References applied only in the UK