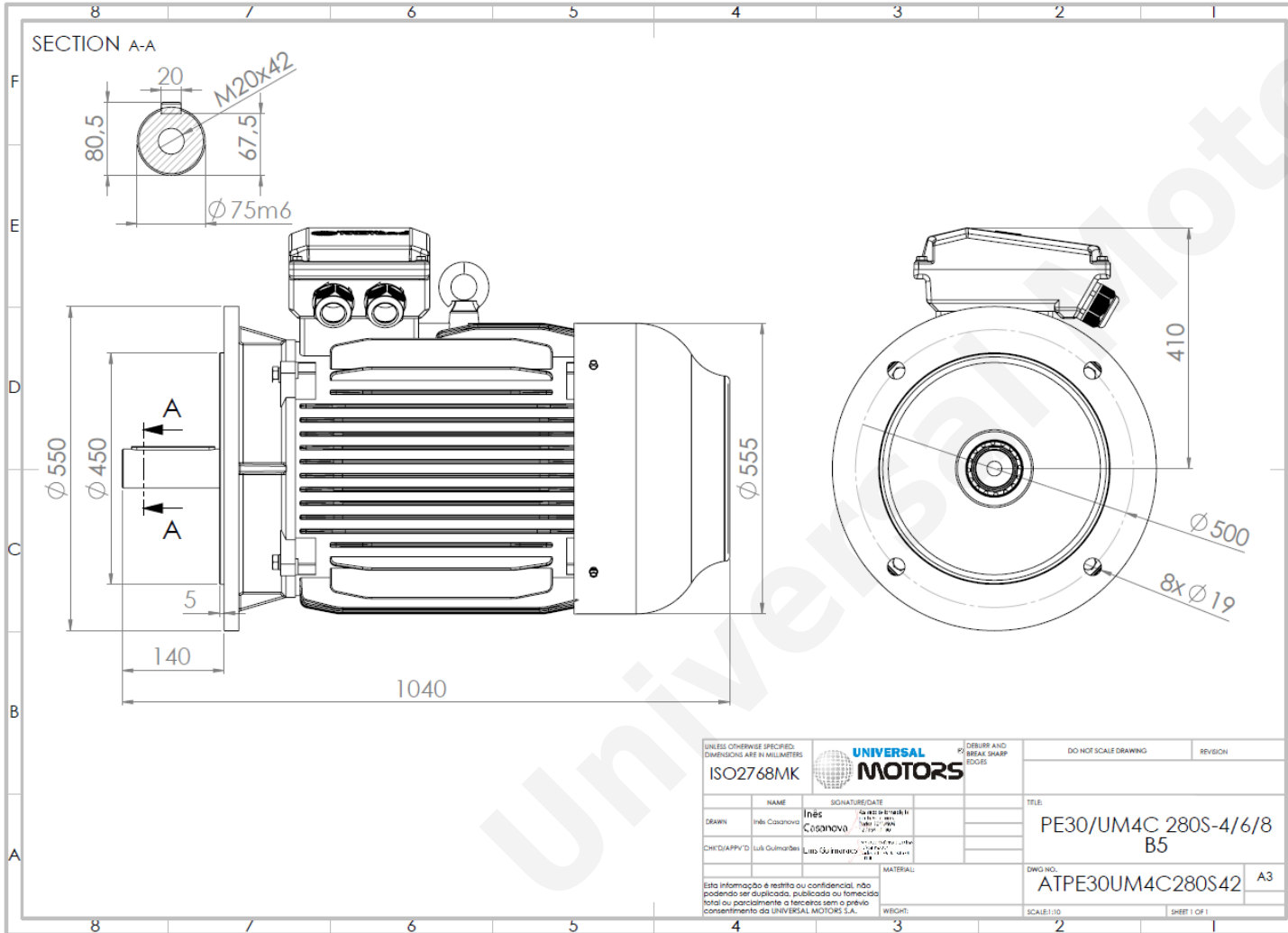


TECHNICAL DATA

Three Phase Electric Motors - Cast Iron Frame
UM3C 280S-8 IE3
37 kW / 50 Cv
740 RPM



Motor type:	UM3C 280S-8 IE3
Output:	37 kW / 50 Cv
Speed (min ⁻¹):	740 RPM
Voltage:	400 V
Frequency:	50 Hz
Current:	73.6 A
Power factor (Cos ϕ):	0.79
Poles:	8
Insulation class:	F
Temperature rise Class:	B
Efficiency 50%:	90.9 %
Efficiency 75%:	91.9 %
Efficiency 100%:	91.8 %
Torque:	477 N.m
Tstarting/Tnominal:	1.9
Istarting/Inominal:	6.6
Tmaximum/Tnominal:	2.0
Noise:	76 Db(A)
Weight:	537 Kg
Bearing DE:	6317 C3
Bearing NDE:	6317 C3

Regime - S1

Altitude - 1000m

Environment Temperature - 40°C

CONTACTS:

Universal Motors UK, Ltd
Unit E2, Meltham Mills Industrial Estate, Meltham Mills Road, Meltham, Holmfirth
West Yorkshire HD9 4AR, U.K.

Tel: +44(0) 1484 660 222
Fax: +44(0) 1484 660 333
Mail: enquiries@universalmotors-group.co.uk

* References applied only in the UK