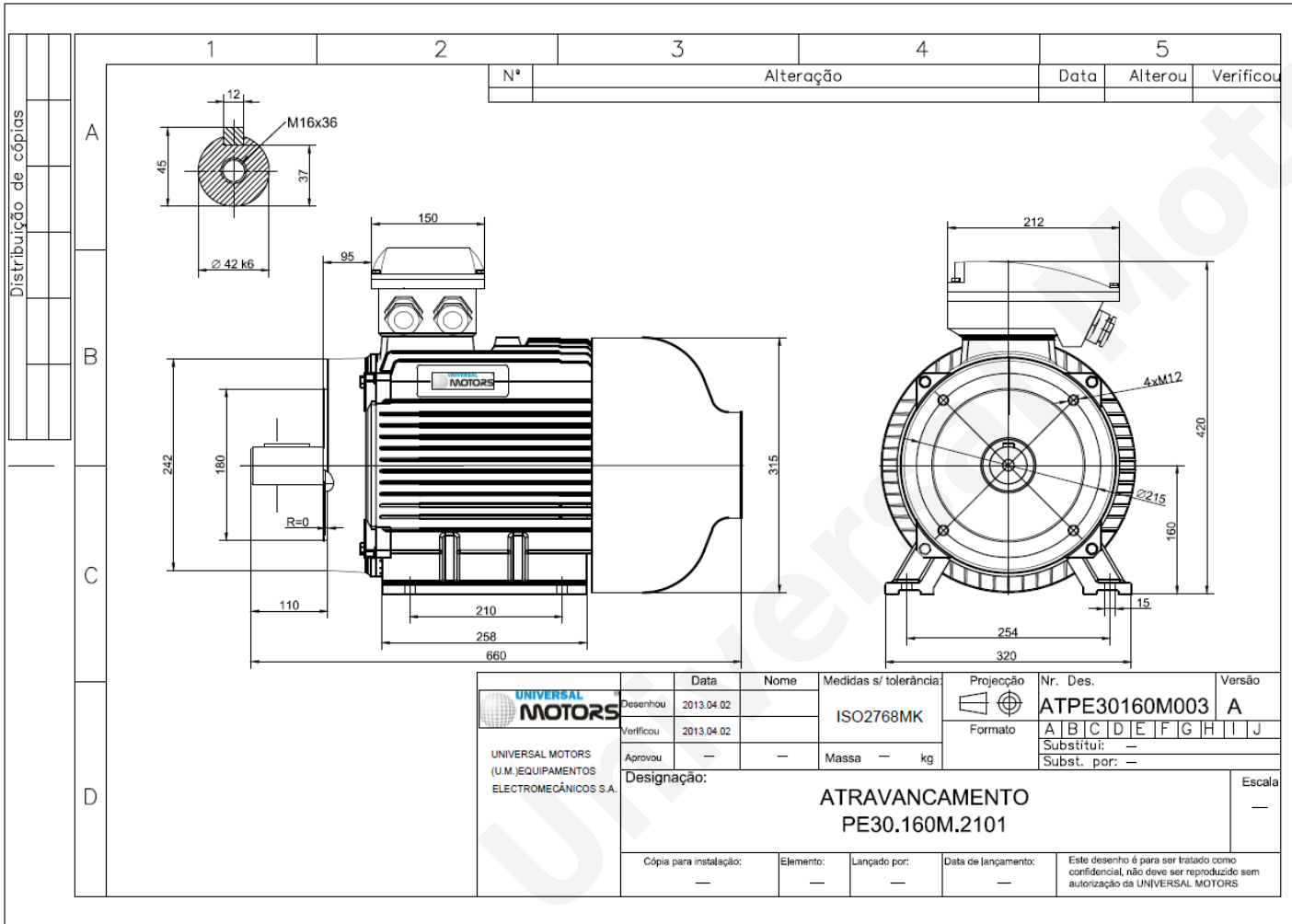


TECHNICAL DATA

Three Phase Electric Motors - Cast Iron Frame
 UM3C 160M-6 IE3
 7.5 kW / 10 Cv
 980 RPM



Motor type: **UM3C 160M-6 IE3**
 Output: **7.5 kW / 10 Cv**
 Speed (min⁻¹): **980 RPM**
 Voltage: **400 V**
 Frequency: **50 Hz**
 Current: **15.4 A**
 Power factor (Cos Ø): **0.79**
 Poles: **6**
 Insulation class: **F**
 Temperature rise Class: **B**
 Efficiency 50%: **88.4 %**
 Efficiency 75%: **89.6 %**
 Efficiency 100%: **89.2 %**
 Torque: **73 N.m**
 Tstarting/Tnominal: **2.0**
 Istarting/Inominal: **7.0**
 Tmaximum/Tnominal: **2.1**
 Noise: **73 Db(A)**
 Weight: **124 Kg**
 Bearing DE: **6309 C3**
 Bearing NDE: **6309 C3**

Regime - S1

Altitude - 1000m

Environment Temperature - 40°C

CONTACTS:

Universal Motors UK, Ltd
 Unit E2, Meltham Mills Industrial Estate, Meltham Mills Road, Meltham,
 Holmfirth
 West Yorkshire HD9 4AR, U.K

Tel: +44(0) 1484 660 222
 Fax: +44(0) 1484 660 333
 Mail: enquiries@universalmotors-group.co.uk

* References applied only in the UK