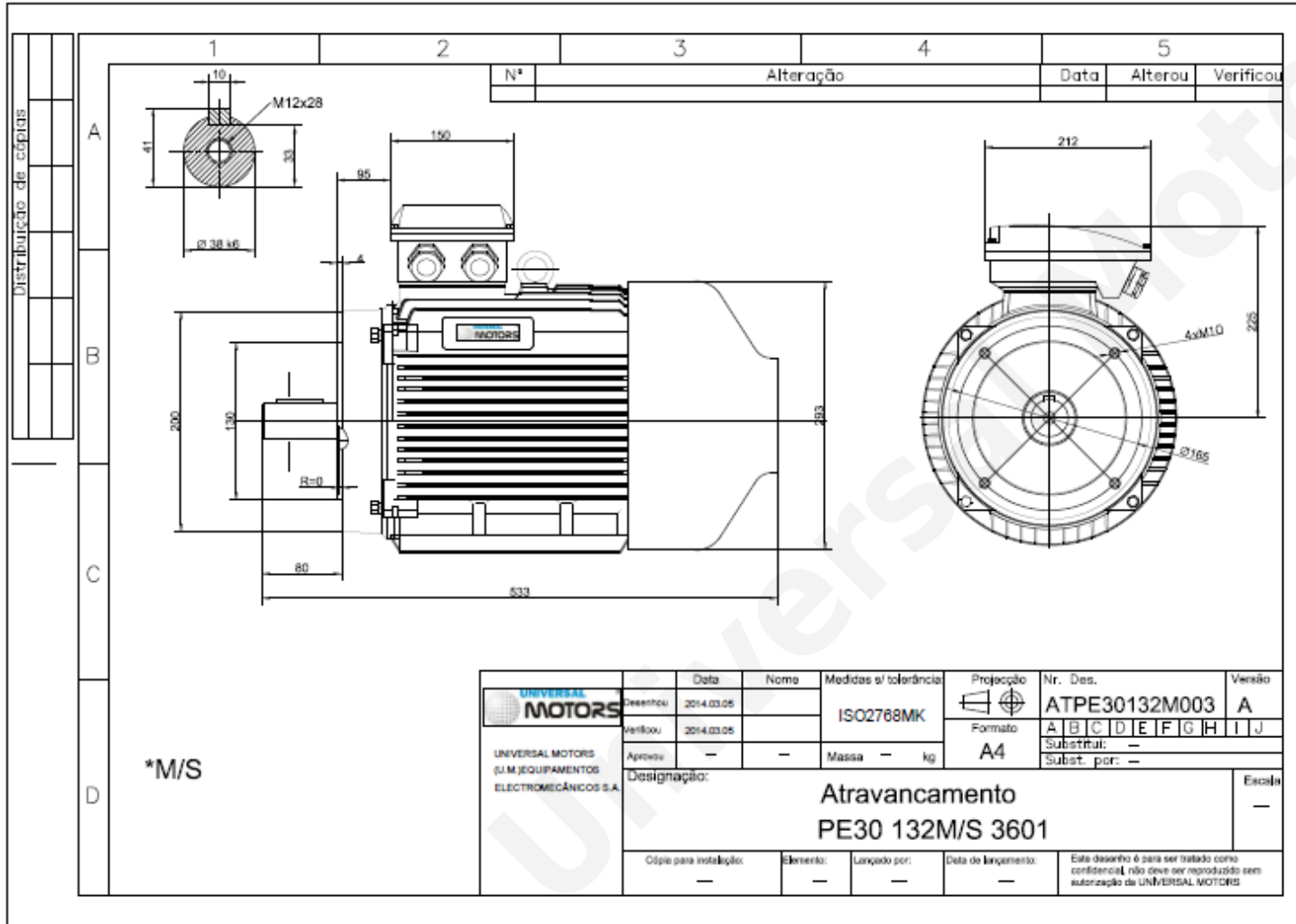


TECHNICAL DATA

Three Phase Electric Motors - Cast Iron Frame
 UM3C 132M-6 IE3
 4 kW / 5.5 Cv
 970 RPM



Motor type:	UM3C 132M-6 IE3
Output:	4 kW / 5.5 Cv
Speed (min ⁻¹):	970 RPM
Voltage:	400 V
Frequency:	50 Hz
Current:	8.99 A
Power factor (Cos Ø):	0.74
Poles:	6
Insulation class:	F
Temperature rise Class:	B
Efficiency 50%:	86.2 %
Efficiency 75%:	87.5 %
Efficiency 100%:	96.9 %
Torque:	39 N.m
Tstarting/Tnominal:	2.0
Istarting/Inominal:	6.8
Tmaximum/Tnominal:	2.1
Noise:	69 Db(A)
Weight:	74 Kg
Bearing DE:	6308 2Z C3
Bearing NDE:	6308 2Z C3

Regime - S1

Altitude - 1000m

Environment Temperature - 40°C

CONTACTS:

Universal Motors UK, Ltd
 Unit E2, Meltham Mills Industrial Estate, Meltham Mills Road, Meltham,
 Holmfirth
 West Yorkshire HD9 4AR, U.K.

Tel: +44(0) 1484 660 222
 Fax: +44(0) 1484 660 333
 Mail: enquiries@universalmotors-group.co.uk

* References applied only in the UK