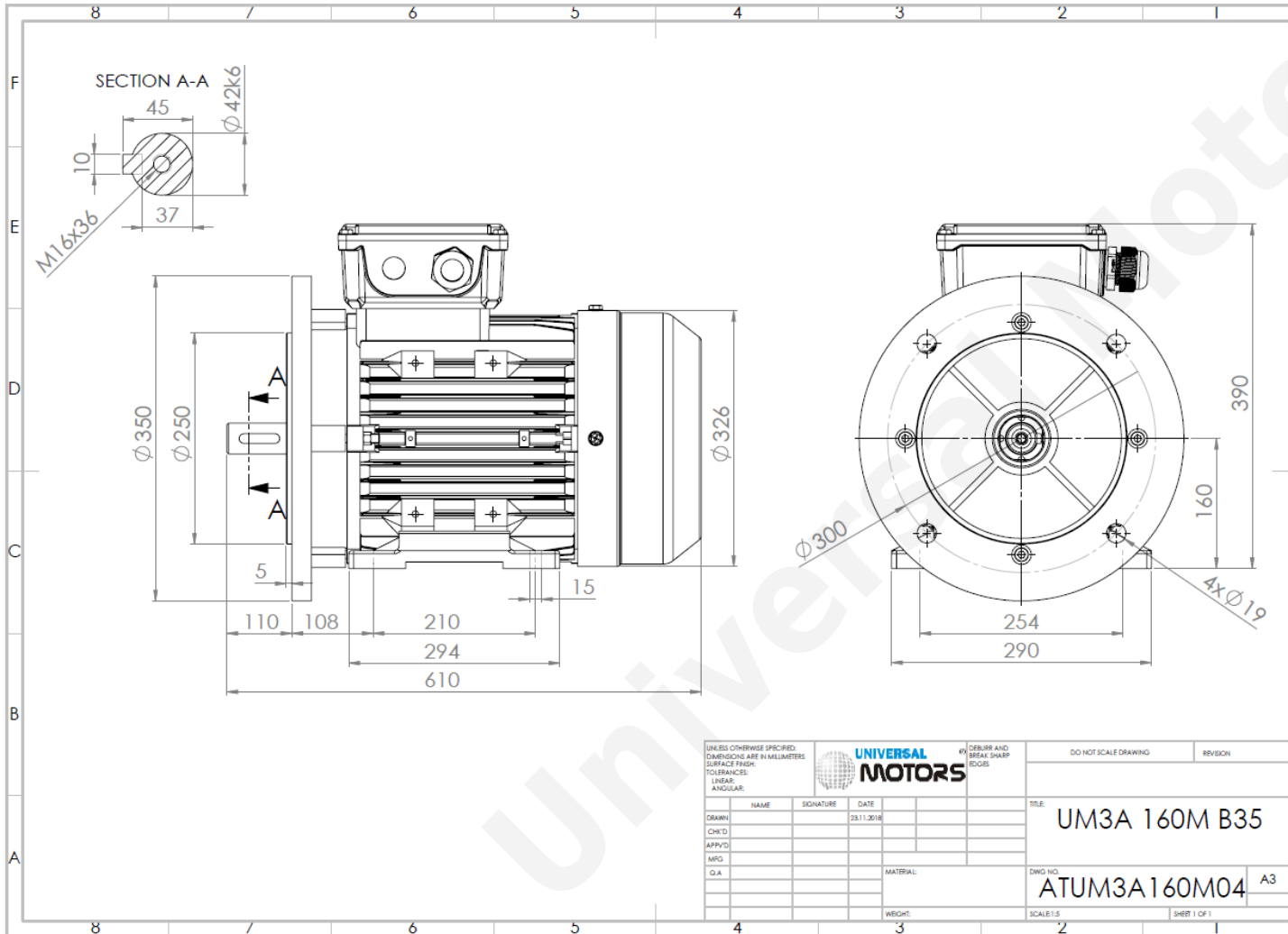


TECHNICAL DATA

Three Phase Electric Motors - Aluminum Frame
UM3A 160M-4
11 kW / 15 Cv
1460 RPM



| | |
|--------------------------------------|----------------------|
| Motor type: | UM3A 160M-4 |
| Output: | 11 kW / 15 Cv |
| Speed (min^{-1}): | 1460 RPM |
| Voltage: | 400 V |
| Frequency: | 50 Hz |
| Current: | 20.7 A |
| Power factor ($\text{Cos } \phi$): | 0.84 |
| Poles: | 4 |
| Insulation class: | F |
| Temperature rise Class: | B |
| Efficiency 50%: | 89.6 % |
| Efficiency 75%: | 90.5 % |
| Efficiency 100%: | 91.4 % |
| Torque: | 72.0 N.m |
| Tstarting/Tnominal: | 2.2 |
| Istarting/Inominal: | 7.5 |
| Tmaximum/Tnominal: | 2.3 |
| Noise: | 77 Db(A) |
| Weight: | 92 Kg |
| Bearing DE: | 6309 2Z C3 |
| Bearing NDE: | 6309 2Z C3 |

| | | | | | | | | | | | |
|---|------|-----------|------------|---------------------|--|------------------------------------|--|----------------------|--|----------|--|
| UNLESS OTHERWISE SPECIFIED: DIMENSIONS ARE IN MILLIMETERS SURFACE FINISH: TOLERANCES: LINEAR: ANGULAR: | | | | UNIVERSAL MOTORS | | DEBURR AND BREAK SHARP EDGES | | DO NOT SCALE DRAWING | | REVISION | |
| DRAWN | NAME | SIGNATURE | DATE | | | TITLE: | | UM3A 160M B35 | | | |
| CHK'D | | | 23.11.2018 | | | DWG NO.: | | ATUM3A160M04 | | | |
| APP'VD | | | | | | SCALE: 1:1.5 | | SHEET 1 OF 1 | | | |
| MRG | | | | | | MATERIAL: | | | | | |
| Q.A. | | | | | | WEIGHT: | | | | | |

Regime - S1

Altitude - 1000m

Environment Temperature - 40°C

CONTACTS:

Universal Motors UK, Ltd
 Unit E2, Meltham Mills Industrial Estate, Meltham Mills Road, Meltham, Holmfirth
 West Yorkshire HD9 4AR, U.K.

Tel: +44(0) 1484 660 222
 Fax: +44(0) 1484 660 333
 Mail: enquiries@universalmotors-group.co.uk

* References applied only in the UK